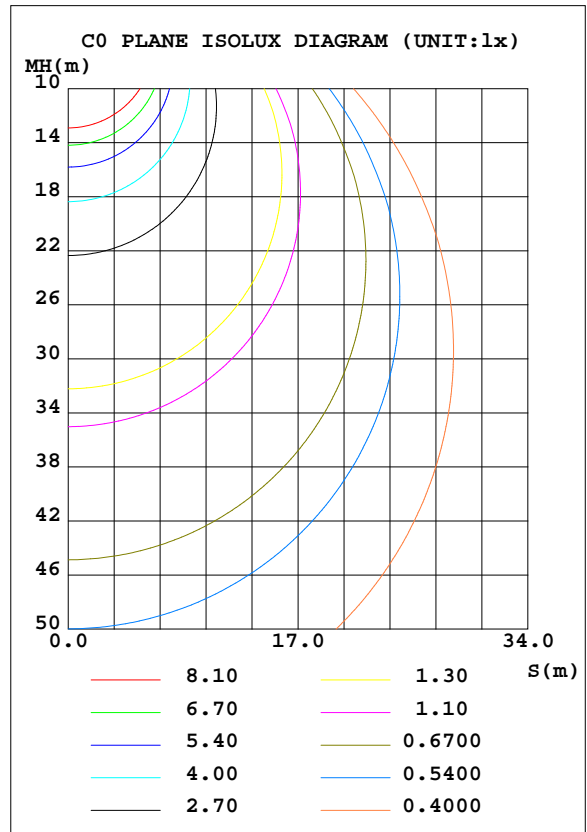
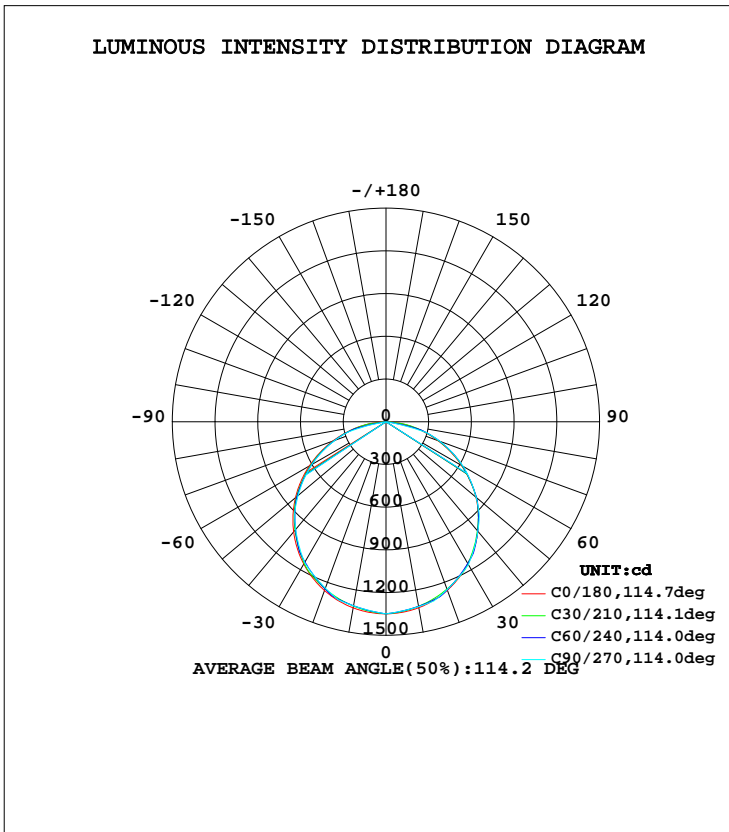


LUMINAIRE PHOTOMETRIC TEST REPORT

Test:U:229.9V I:0.1347A P:30.24W PF:0.9765 Lamp Flux:3880.2x1 lm		
NAME: IL-PN195 3.500K	TYPE:	WEIGHT:
SPEC.:	DIM.:	SERIAL No.:
MFR.: EVERFINE	SUR.:250*1150	PROTECTION ANGLE:

DATA OF LAMP		PHOTOMETRIC DATA Eff: 128.31 lm/W			
MODEL	IL-PN195 3.500K	I <sub>max</sub> (cd)	1349	S/MH(C0/180)	1.27
NOMINAL POWER(W)	30	LOR(%)	100.0	S/MH(C90/270)	1.26
RATED VOLTAGE(V)	230	TOTAL FLUX(lm)	3880.2	η UP, DN(C0-180)	0.0, 50.4
NOMINAL FLUX(lm)	3880.2	CIE CLASS	DIRECT	η UP, DN(C180-360)	0.0, 49.6
LAMPS INSIDE	1	η up(%)	0.0	CIBSE SHR NOM	1.25
TEST VOLTAGE(V)	230	η down(%)	100.0	CIBSE SHR MAX	1.35



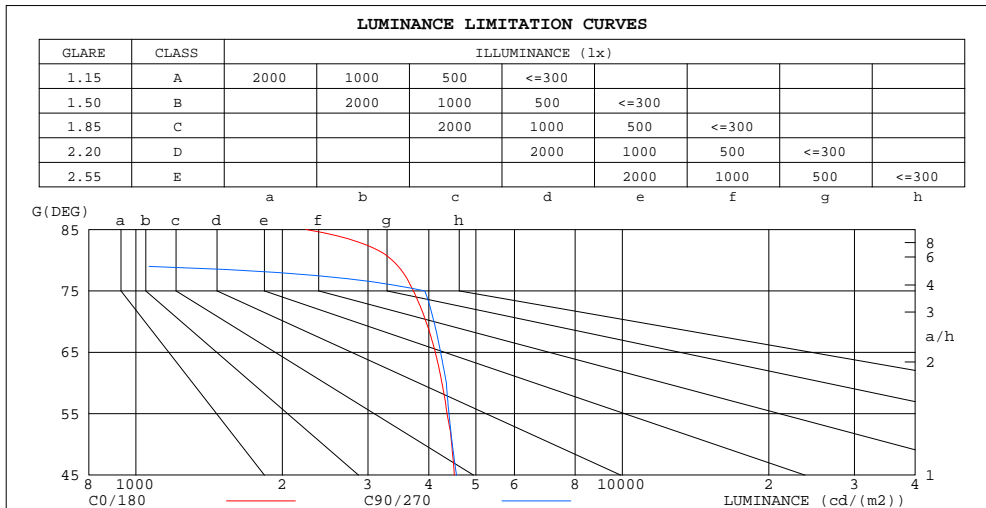
C Range: 0 - 360DEG  
 C Interval: 5.0DEG  
 Test Speed: HIGH  
 Temperature:25.3DEG  
 Operators:DAMIN  
 Test Date:2023-8-8

γ Range: 0 - 90DEG  
 γ Interval: 0.5DEG  
 Test System:EVERFINE GO-2000A\_V1 SYSTEM V2.0.286  
 Humidity:65.0%  
 Test Distance:13.420m [K=1.0000]  
 Remarks: IL-PN195 3.500K

ZONAL FLUX DIAGRAM  
AND LUMINANCE LIMITATION CURVES

ZONAL FLUX DIAGRAM:

γ	C0	C45	C90	C135	C180	C225	C270	C315	γ	Φ zone	Φ total	lum, lamp
5	1343	1335	1334	1335	1343	1333	1331	1333	0- 5	32.05	32.05	0.83,0.83
10	1326	1315	1318	1316	1327	1313	1313	1311	5- 10	94.81	126.9	3.27,3.27
15	1298	1290	1303	1292	1300	1287	1294	1284	10- 15	154.7	281.5	7.26,7.26
20	1259	1261	1254	1264	1262	1256	1244	1252	15- 20	209.7	491.3	12.7,12.7
25	1210	1206	1206	1210	1213	1200	1193	1196	20- 25	257.4	748.6	19.3,19.3
30	1151	1145	1158	1148	1155	1137	1143	1133	25- 30	297.0	1046	26.9,26.9
35	1082	1080	1081	1083	1086	1071	1064	1067	30- 35	327.3	1373	35.4,35.4
40	1005	1009	1004	1012	1009	998.8	985.9	995.0	35- 40	346.1	1719	44.3,44.3
45	917.9	916.5	927.2	920.2	923.3	906.7	907.4	901.3	40- 45	353.9	2073	53.4,53.4
50	823.9	823.3	826.5	827.3	829.7	812.1	805.6	806.9	45- 50	350.4	2423	62.5,62.5
55	719.1	728.9	725.8	731.5	729.2	716.4	703.7	711.8	50- 55	334.3	2758	71.1,71.1
60	612.2	617.8	625.0	620.8	622.2	605.7	601.8	600.1	55- 60	307.4	3065	79,79
65	501.3	508.8	514.1	511.7	511.4	496.5	491.2	490.7	60- 65	271.1	3336	86,86
70	388.2	399.3	403.1	401.9	398.5	387.2	380.5	381.4	65- 70	226.4	3562	91.8,91.8
75	276.8	289.0	292.2	291.3	285.9	277.3	269.8	271.9	70- 75	175.7	3738	96.3,96.3
80	168.0	157.3	0	159.0	177.4	148.2	0	144.1	75- 80	108.4	3847	99.1,99.1
85	55.97	0	0	0	64.39	0	0	0	80- 85	30.79	3877	99.9,99.9
90	0.6410	0	0	0	0.8784	0	0	0	85- 90	2.885	3880	100,100
95									90- 95			
100									95-100			
105									100-105			
110									105-110			
115									110-115			
120									115-120			
125									120-125			
130									125-130			
135									130-135			
140									135-140			
145									140-145			
150									145-150			
155									150-155			
160									155-160			
165									160-165			
170									165-170			
175									170-175			
180									175-180			
DEG	LUMINOUS INTENSITY:cd									UNIT:lm		



LUMINANCE cd/(m2)		
G (DEG)	C0/180	C90/270
85	2234	0
80	3365	0
75	3720	3927
70	3948	4100
65	4126	4231
60	4259	4348
55	4361	4401
50	4458	4472
45	4515	4561

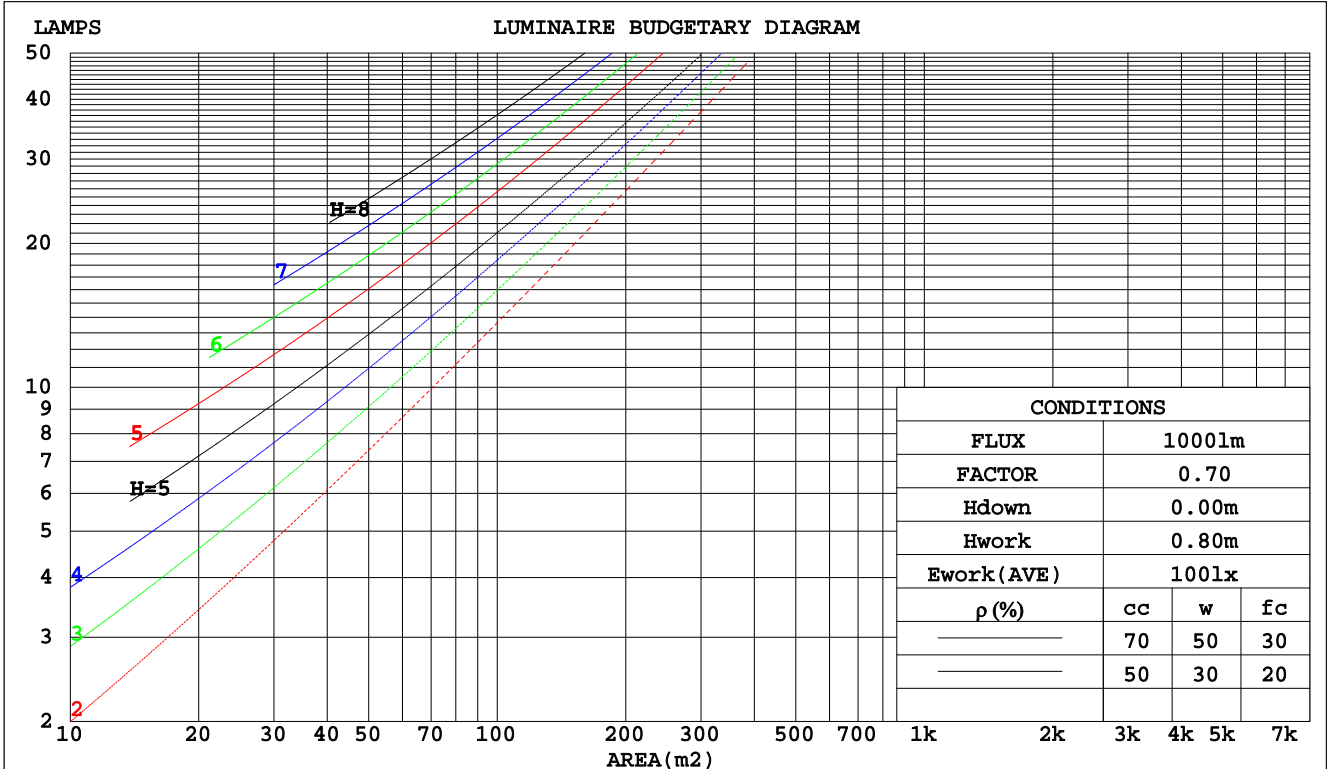
C Range: 0 - 360DEG  
C Interval: 5.0DEG  
Test Speed: HIGH  
Temperature: 25.3DEG  
Operators: DAMIN  
Test Date: 2023-8-8

γ Range: 0 - 90DEG  
γ Interval: 0.5DEG  
Test System: EVERFINE GO-2000A\_V1 SYSTEM V2.0.286  
Humidity: 65.0%  
Test Distance: 13.420m [K=1.0000]  
Remarks: IL-PN195 3.500K

CU AND LUMINAIRE BUDGETARY ESTIMATE DIAGRAM

Test:U:229.9V I:0.1347A P:30.24W PF:0.9765 Lamp Flux:3880.2x1 lm		
NAME: IL-PN195 3.500K	TYPE:	WEIGHT:
SPEC.:	DIM.:	SERIAL No.:
MFR.: EVERFINE	SUR.:250*1150	PROTECTION ANGLE:

pcc	80%			70%			50%			30%			10%			0
pw	50%	30%	10%	50%	30%	10%	50%	30%	10%	50%	30%	10%	50%	30%	10%	0
pfc	20%			20%			20%			20%			20%			0
RCR	RCR:Room Cavity Ratio															
	Coefficients of Utilization(CU)															
0.0	1.19	1.19	1.19	1.16	1.16	1.16	1.11	1.11	1.11	1.06	1.06	1.06	1.02	1.02	1.02	.00
1.0	1.04	1.00	.96	1.02	.98	.95	.98	.95	.92	.94	.91	.89	.90	.88	.86	.84
2.0	.91	.84	.78	.89	.83	.77	.85	.80	.75	.82	.78	.74	.79	.75	.72	.70
3.0	.79	.71	.65	.78	.70	.64	.75	.68	.63	.72	.67	.62	.70	.65	.61	.59
4.0	.70	.61	.55	.69	.61	.54	.66	.59	.54	.64	.58	.53	.62	.57	.52	.50
5.0	.63	.54	.47	.62	.53	.47	.59	.52	.46	.57	.51	.46	.56	.50	.45	.43
6.0	.56	.47	.41	.55	.47	.41	.54	.46	.40	.52	.45	.40	.50	.44	.40	.38
7.0	.51	.42	.36	.50	.42	.36	.49	.41	.36	.47	.40	.35	.46	.40	.35	.33
8.0	.47	.38	.32	.46	.38	.32	.45	.37	.32	.43	.37	.32	.42	.36	.31	.29
9.0	.43	.34	.29	.42	.34	.29	.41	.34	.29	.40	.33	.28	.39	.33	.28	.26
10.0	.39	.31	.26	.39	.31	.26	.38	.31	.26	.37	.30	.26	.36	.30	.26	.24



C Range: 0 - 360DEG  
 C Interval: 5.0DEG  
 Test Speed: HIGH  
 Temperature:25.3DEG  
 Operators:DAMIN  
 Test Date:2023-8-8

γ Range: 0 - 90DEG  
 γ Interval: 0.5DEG  
 Test System:EVERFINE GO-2000A\_V1 SYSTEM V2.0.286  
 Humidity:65.0%  
 Test Distance:13.420m [K=1.0000]  
 Remarks: IL-PN195 3.500K

WEC AND CCEC

Test:U:229.9V I:0.1347A P:30.24W PF:0.9765 Lamp Flux:3880.2x1 lm		
NAME: IL-PN195 3.500K	TYPE:	WEIGHT:
SPEC.:	DIM.:	SERIAL No.:
MFR.: EVERFINE	SUR.:250*1150	PROTECTION ANGLE:

ρcc	80%			70%			50%			30%			10%			0
ρw	50%	30%	10%	50%	30%	10%	50%	30%	10%	50%	30%	10%	50%	30%	10%	0
ρfc	20%			20%			20%			20%			20%			0
RCR	RCR:Room Cavity Ratio						Wall Exitance Coefficients(WEC)									
0.0																
1.0	.303	.172	.055	.296	.169	.054	.282	.162	.052	.270	.156	.050	.259	.150	.048	
2.0	.289	.159	.049	.283	.156	.048	.271	.151	.047	.261	.146	.046	.251	.142	.045	
3.0	.269	.143	.043	.264	.141	.043	.253	.137	.042	.244	.134	.041	.235	.130	.040	
4.0	.249	.129	.038	.244	.128	.038	.235	.125	.037	.227	.122	.037	.219	.119	.036	
5.0	.231	.117	.034	.226	.116	.034	.218	.114	.033	.210	.111	.033	.203	.109	.033	
6.0	.214	.107	.031	.210	.106	.031	.203	.104	.030	.196	.102	.030	.190	.100	.030	
7.0	.199	.098	.028	.196	.098	.028	.189	.096	.028	.183	.094	.027	.177	.092	.027	
8.0	.186	.091	.026	.183	.090	.025	.177	.089	.025	.172	.087	.025	.167	.086	.025	
9.0	.174	.084	.024	.172	.084	.023	.166	.082	.023	.161	.081	.023	.157	.080	.023	
10.0	.164	.079	.022	.161	.078	.022	.157	.077	.022	.152	.076	.022	.148	.075	.021	

ρcc	80%			70%			50%			30%			10%			0
ρw	50%	30%	10%	50%	30%	10%	50%	30%	10%	50%	30%	10%	50%	30%	10%	0
ρfc	20%			20%			20%			20%			20%			0
RCR	RCR:Room Cavity Ratio						Ceiling Cavity Exitance Coefficients(CCEC)									
0.0	.190	.190	.190	.163	.163	.163	.111	.111	.111	.064	.064	.064	.020	.020	.020	
1.0	.180	.156	.135	.154	.134	.116	.105	.092	.080	.061	.053	.047	.019	.017	.015	
2.0	.172	.132	.098	.147	.114	.085	.101	.079	.059	.058	.046	.035	.019	.015	.011	
3.0	.164	.114	.074	.141	.099	.065	.097	.068	.045	.056	.040	.027	.018	.013	.009	
4.0	.157	.101	.058	.135	.087	.051	.093	.061	.036	.054	.036	.021	.017	.012	.007	
5.0	.149	.091	.047	.128	.078	.041	.088	.055	.029	.051	.032	.017	.017	.010	.006	
6.0	.142	.082	.039	.122	.071	.034	.084	.050	.024	.049	.029	.014	.016	.010	.005	
7.0	.136	.075	.033	.117	.065	.029	.081	.046	.020	.047	.027	.012	.015	.009	.004	
8.0	.129	.070	.029	.111	.060	.025	.077	.042	.018	.045	.025	.011	.014	.008	.003	
9.0	.123	.065	.025	.106	.056	.022	.073	.039	.016	.043	.023	.009	.014	.008	.003	
10.0	.117	.060	.022	.101	.052	.020	.070	.037	.014	.041	.022	.008	.013	.007	.003	

C Range: 0 - 360DEG  
 C Interval: 5.0DEG  
 Test Speed: HIGH  
 Temperature:25.3DEG  
 Operators:DAMIN  
 Test Date:2023-8-8

γ Range: 0 - 90DEG  
 γ Interval: 0.5DEG  
 Test System:EVERFINE GO-2000A\_V1 SYSTEM V2.0.286  
 Humidity:65.0%  
 Test Distance:13.420m [K=1.0000]  
 Remarks: IL-PN195 3.500K

UGR(Unified Glare Rating) Table

Test:U:229.9V I:0.1347A P:30.24W PF:0.9765 Lamp Flux:3880.2x1 lm										
NAME: IL-PN195 3.500K					TYPE:			WEIGHT:		
SPEC.:					DIM.:			SERIAL No.:		
MFR.: EVERFINE					SUR.:250*1150			PROTECTION ANGLE:		
ceiling/cavity	0.7	0.7	0.5	0.5	0.3	0.7	0.7	0.5	0.5	0.3
walls	0.5	0.3	0.5	0.3	0.3	0.5	0.3	0.5	0.3	0.3
working plane	0.2	0.2	0.2	0.2	0.2	0.2	0.2	0.2	0.2	0.2
Room dimensions	Viewed crosswise					Viewed endwise				
x = 2H y = 2H	18.1	19.6	18.3	19.8	20.0	18.2	19.7	18.4	19.9	20.1
3H	19.6	21.1	19.9	21.3	21.5	19.8	21.2	20.1	21.4	21.7
4H	20.3	21.6	20.6	21.9	22.1	20.5	21.8	20.8	22.0	22.3
6H	20.7	22.0	21.1	22.3	22.6	20.5	21.8	20.9	22.1	22.3
8H	20.9	22.1	21.2	22.4	22.7	20.5	21.7	20.8	22.0	22.3
12H	20.9	22.1	21.3	22.4	22.7	20.4	21.6	20.8	21.9	22.2
4H 2H	18.7	20.1	19.0	20.3	20.6	18.8	20.1	19.1	20.4	20.6
3H	20.5	21.7	20.8	22.0	22.3	20.6	21.8	21.0	22.1	22.4
4H	21.3	22.3	21.6	22.7	23.0	21.4	22.5	21.8	22.8	23.1
6H	21.9	22.8	22.3	23.2	23.5	21.5	22.5	21.9	22.8	23.2
8H	22.0	22.9	22.5	23.3	23.7	21.5	22.4	21.9	22.7	23.1
12H	22.1	23.0	22.6	23.3	23.7	21.4	22.3	21.9	22.6	23.0
8H 4H	21.6	22.5	22.0	22.8	23.2	21.7	22.6	22.1	23.0	23.3
6H	22.3	23.1	22.8	23.5	23.9	21.9	22.6	22.3	23.0	23.4
8H	22.6	23.3	23.1	23.7	24.2	21.8	22.5	22.3	22.9	23.4
12H	22.8	23.4	23.3	23.8	24.3	21.8	22.4	22.3	22.8	23.3
12H 4H	21.6	22.4	22.0	22.8	23.2	21.7	22.5	22.2	22.9	23.3
6H	22.3	23.0	22.8	23.4	23.9	21.9	22.6	22.4	23.0	23.4
8H	22.6	23.2	23.1	23.7	24.1	21.9	22.4	22.4	22.9	23.4
Variations with the observer position at spacings:										
S = 1.0H	+ 0.1 / - 0.2					+ 0.2 / - 0.2				
1.5H	+ 0.2 / - 0.3					+ 0.1 / - 0.2				
2.0H	+ 0.2 / - 0.3					+ 0.2 / - 0.4				

CIE Pub.117 Corrected 3880 lm Total Lamp Luminous Flux.(8log(F/F0) = 4.7)

C Range: 0 - 360DEG  
 C Interval: 5.0DEG  
 Test Speed: HIGH  
 Temperature:25.3DEG  
 Operators:DAMIN  
 Test Date:2023-8-8

γ Range: 0 - 90DEG  
 γ Interval: 0.5DEG  
 Test System:EVERFINE GO-2000A\_V1 SYSTEM V2.0.286  
 Humidity:65.0%  
 Test Distance:13.420m [K=1.0000]  
 Remarks: IL-PN195 3.500K

UTILIZATION FACTORS TABLE

Test:U:229.9V I:0.1347A P:30.24W PF:0.9765 Lamp Flux:3880.2x1 lm		
NAME: IL-PN195 3.500K	TYPE:	WEIGHT:
SPEC.:	DIM.:	SERIAL No.:
MFR.: EVERFINE	SUR.:250*1150	PROTECTION ANGLE:

REFLECTANCE										
Ceiling	0.8	0.8	0.8	0.7	0.7	0.7	0.5	0.5	0.5	0
Walls	0.7	0.5	0.3	0.7	0.5	0.3	0.7	0.5	0.3	0
Working plane	0.2	0.2	0.2	0.2	0.2	0.2	0.2	0.2	0.2	0
ROOM INDEX	UTILIZATION FACTORS(PERCENT) $k(RI) \times RCR = 5$									
k = 0.60	57	46	39	57	45	39	55	45	38	32
0.80	67	56	48	66	55	48	65	55	48	41
1.00	76	65	57	75	64	57	72	66	57	49
1.25	83	73	65	82	72	65	79	70	64	57
1.50	88	78	71	86	77	71	83	76	70	62
2.00	95	87	80	93	85	79	90	83	78	70
2.50	99	91	85	97	90	84	93	87	83	74
3.00	102	96	90	100	94	89	96	91	87	79
4.00	107	101	96	104	99	95	100	96	92	83
5.00	109	104	100	107	102	99	102	99	96	87
ROOM INDEX	UF(total)									Direct
According to DIN EN 13032-2 2004			Suspended				SHRNOM = 1.25			

C Range: 0 - 360DEG  
 C Interval: 5.0DEG  
 Test Speed: HIGH  
 Temperature:25.3DEG  
 Operators:DAMIN  
 Test Date:2023-8-8

$\gamma$  Range: 0 - 90DEG  
 $\gamma$  Interval: 0.5DEG  
 Test System:EVERFINE GO-2000A\_V1 SYSTEM V2.0.286  
 Humidity:65.0%  
 Test Distance:13.420m [K=1.0000]  
 Remarks: IL-PN195 3.500K

ISOCANDELA DIAGRAM

Test:U:229.9V I:0.1347A P:30.24W PF:0.9765 Lamp Flux:3880.2x1 lm		
NAME: IL-PN195 3.500K	TYPE:	WEIGHT:
SPEC.:	DIM.:	SERIAL No.:
MFR.: EVERFINE	SUR.:250*1150	PROTECTION ANGLE:

Conical surface Flux(90deg):

2072.9 lm

%lum = 53.4%

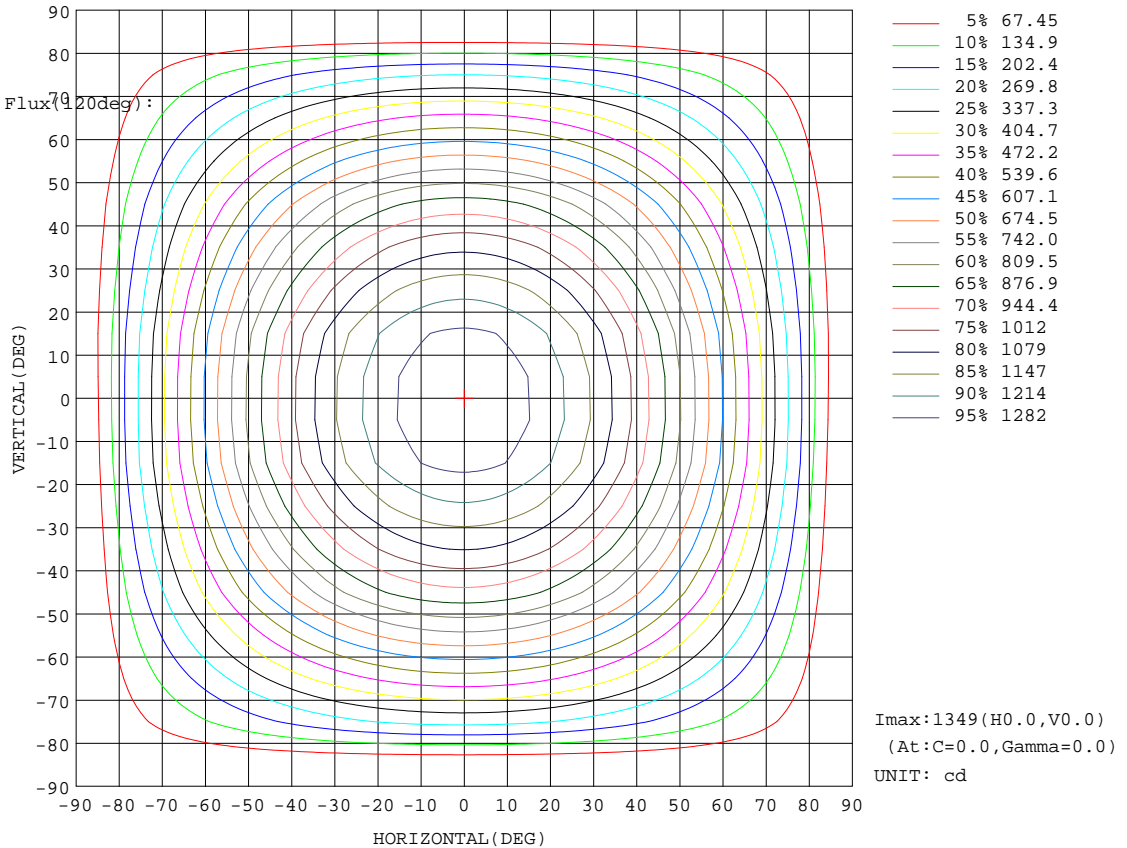
%lamp = 53.4%

Conical surface Flux(70deg):

3064.9 lm

%lum = 79.0%

%lamp = 79.0%

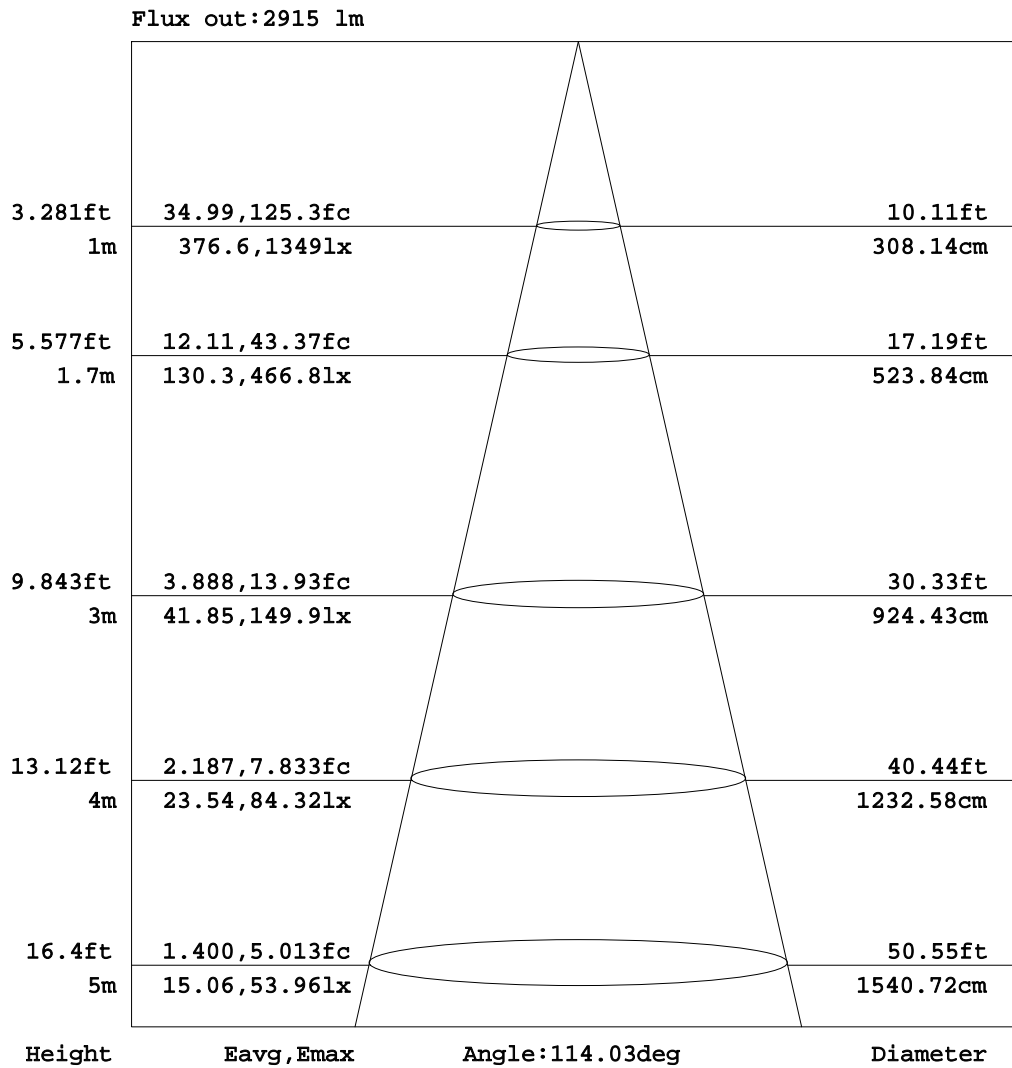


C Range: 0 - 360DEG  
C Interval: 5.0DEG  
Test Speed: HIGH  
Temperature:25.3DEG  
Operators:DAMIN  
Test Date:2023-8-8

γ Range: 0 - 90DEG  
γ Interval: 0.5DEG  
Test System:EVERFINE GO-2000A\_V1 SYSTEM V2.0.286  
Humidity:65.0%  
Test Distance:13.420m [K=1.0000]  
Remarks: IL-PN195 3.500K

**AAI Figure**

Test:U:229.9V I:0.1347A P:30.24W PF:0.9765 Lamp Flux:3880.2x1 lm		
NAME: IL-PN195 3.500K	TYPE:	WEIGHT:
SPEC.:	DIM.:	SERIAL No.:
MFR.: EVERFINE	SUR.:250*1150	PROTECTION ANGLE:



Note:The Curves indicate the illuminated area and the average illumination when the luminaire is at different distance.

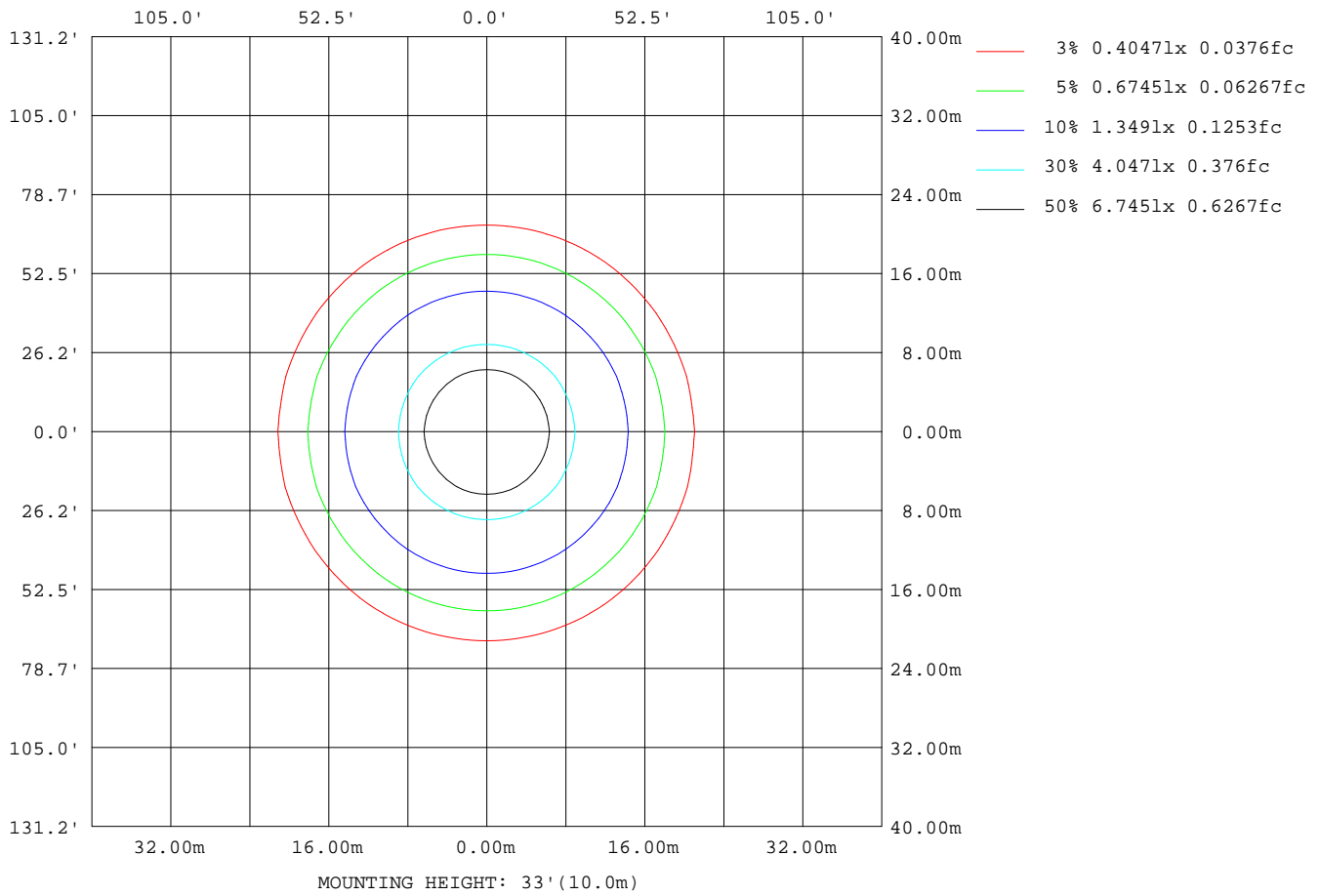
C Range: 0 - 360DEG  
 C Interval: 5.0DEG  
 Test Speed: HIGH  
 Temperature:25.3DEG  
 Operators:DAMIN  
 Test Date:2023-8-8

γ Range: 0 - 90DEG  
 γ Interval: 0.5DEG  
 Test System:EVERFINE GO-2000A\_V1 SYSTEM V2.0.286  
 Humidity:65.0%  
 Test Distance:13.420m [K=1.0000]  
 Remarks: IL-PN195 3.500K



ISOLUX DIAGRAM

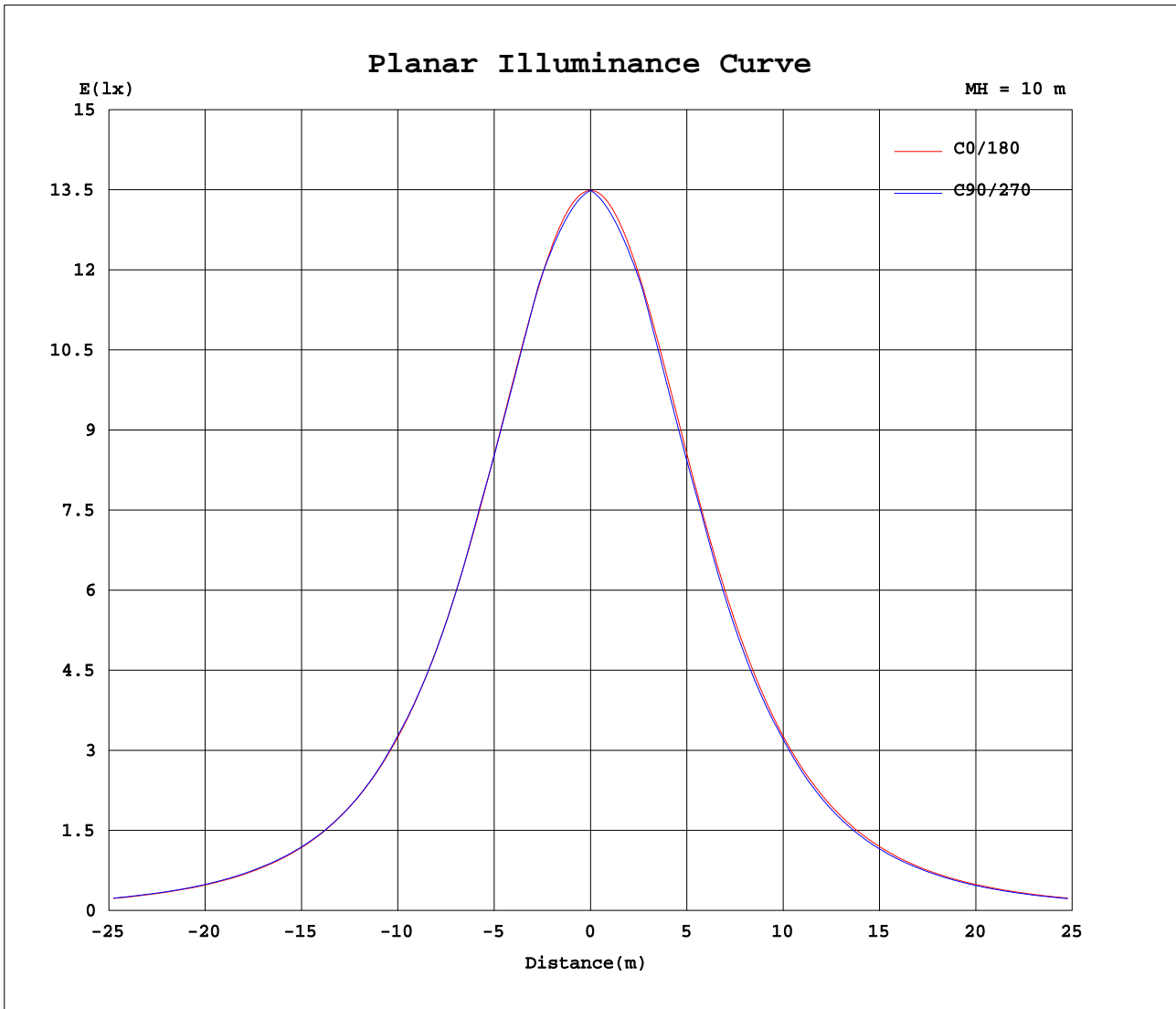
Test:U:229.9V I:0.1347A P:30.24W PF:0.9765 Lamp Flux:3880.2x1 lm		
NAME: IL-PN195 3.500K	TYPE:	WEIGHT:
SPEC.:	DIM.:	SERIAL No.:
MFR.: EVERFINE	SUR.:250*1150	PROTECTION ANGLE:



C Range: 0 - 360DEG  
 C Interval: 5.0DEG  
 Test Speed: HIGH  
 Temperature:25.3DEG  
 Operators:DAMIN  
 Test Date:2023-8-8

γ Range: 0 - 90DEG  
 γ Interval: 0.5DEG  
 Test System:EVERFINE GO-2000A\_V1 SYSTEM V2.0.286  
 Humidity:65.0%  
 Test Distance:13.420m [K=1.0000]  
 Remarks: IL-PN195 3.500K

Planar Illuminance Curve



C Range: 0 - 360DEG  
 C Interval: 5.0DEG  
 Test Speed: HIGH  
 Temperature: 25.3DEG  
 Operators: DAMIN  
 Test Date: 2023-8-8

γ Range: 0 - 90DEG  
 γ Interval: 0.5DEG  
 Test System: EVERFINE GO-2000A\_V1 SYSTEM V2.0.286  
 Humidity: 65.0%  
 Test Distance: 13.420m [K=1.0000]  
 Remarks: IL-PN195 3.500K

LUMINOUS DISTRIBUTION INTENSITY DATA

Test:U:229.9V I:0.1347A P:30.24W PF:0.9765 Lamp Flux:3880.2x1 lm		
NAME: IL-PN195 3.500K	TYPE:	WEIGHT:
SPEC.:	DIM.:	SERIAL No.:
MFR.: EVERFINE	SUR.:250*1150	PROTECTION ANGLE:

Table--1

UNIT: cd

C( DEG) γ (DEG)	0	5	10	15	20	25	30	35	40	45	50	55	60	65	70	75	80	85	90
0	1349	1349	1349	1349	1349	1349	1349	1349	1349	1349	1349	1349	1349	1349	1349	1349	1349	1349	1349
5	1343	1342	1340	1339	1338	1337	1336	1336	1335	1335	1334	1334	1334	1333	1333	1333	1334	1333	1334
10	1326	1323	1321	1319	1318	1317	1316	1316	1315	1315	1316	1316	1316	1316	1317	1317	1317	1318	1318
15	1298	1294	1291	1289	1288	1287	1287	1288	1289	1290	1292	1294	1296	1298	1299	1300	1301	1302	1303
20	1259	1255	1251	1249	1249	1249	1251	1254	1257	1261	1261	1259	1257	1256	1255	1255	1254	1254	1254
25	1210	1205	1201	1200	1201	1203	1207	1213	1209	1206	1205	1204	1204	1204	1205	1205	1206	1206	1206
30	1151	1145	1141	1141	1144	1150	1151	1147	1145	1145	1145	1147	1149	1151	1153	1155	1157	1158	1158
35	1082	1075	1073	1074	1080	1081	1077	1076	1077	1080	1084	1088	1086	1084	1082	1082	1081	1081	1081
40	1005	997	995	1000	1004	999	999	1001	1006	1009	1005	1003	1002	1002	1002	1003	1003	1004	1004
45	918	910	910	917	913	913	917	923	919	917	916	917	918	920	922	924	926	927	927
50	824	816	818	820	818	823	828	823	822	823	826	830	830	828	827	827	826	826	826
55	719	714	720	717	718	723	722	722	725	729	726	725	724	724	724	725	725	725	726
60	612	608	613	610	617	613	615	621	619	618	618	618	620	621	622	623	624	625	625
65	501	498	500	504	502	505	508	507	507	509	511	513	513	513	513	514	514	514	514
70	388	388	388	389	392	394	394	396	399	399	400	401	401	402	402	403	403	403	403
75	277	275	278	279	281	283	286	287	288	289	290	290	291	291	292	292	292	292	292
80	168	163	166	172	176	178	180	181	181	157	127	99.7	74.6	52.6	34.1	19.4	8.67	2.18	0.00
85	56.0	56.0	68.2	75.3	71.9	36.1	0.00	0.00	0.00	0.00	0.00	0.00	0.00	0.00	0.00	0.00	0.00	0.00	0.00
90	0.64	0.00	0.00	0.00	0.00	0.00	0.00	0.00	0.00	0.00	0.00	0.00	0.00	0.00	0.00	0.00	0.00	0.00	0.00

C Range: 0 - 360DEG  
 C Interval: 5.0DEG  
 Test Speed: HIGH  
 Temperature:25.3DEG  
 Operators:DAMIN  
 Test Date:2023-8-8

γ Range: 0 - 90DEG  
 γ Interval: 0.5DEG  
 Test System:EVERFINE GO-2000A\_V1 SYSTEM V2.0.286  
 Humidity:65.0%  
 Test Distance:13.420m [K=1.0000]  
 Remarks: IL-PN195 3.500K





LUMINOUS DISTRIBUTION INTENSITY DATA

Test:U:229.9V I:0.1347A P:30.24W PF:0.9765 Lamp Flux:3880.2x1 lm		
NAME: IL-PN195 3.500K	TYPE:	WEIGHT:
SPEC.:	DIM.:	SERIAL No.:
MFR.: EVERFINE	SUR.:250*1150	PROTECTION ANGLE:

Table--4

UNIT: cd

C( DEG) γ (DEG)	285	290	295	300	305	310	315	320	325	330	335	340	345	350	355				
0	1349	1349	1349	1349	1349	1349	1349	1349	1349	1349	1349	1349	1349	1349	1349				
5	1331	1331	1331	1331	1332	1332	1333	1333	1334	1335	1336	1337	1338	1340	1341				
10	1312	1312	1311	1311	1311	1311	1311	1312	1312	1313	1314	1316	1318	1320	1323				
15	1292	1291	1290	1288	1287	1285	1284	1284	1283	1283	1284	1285	1287	1290	1294				
20	1244	1245	1246	1247	1249	1252	1252	1249	1247	1245	1245	1245	1246	1249	1254				
25	1192	1192	1192	1192	1193	1194	1196	1200	1204	1200	1197	1196	1196	1199	1203				
30	1141	1139	1137	1135	1134	1133	1133	1134	1137	1142	1142	1138	1137	1139	1143				
35	1065	1066	1068	1071	1074	1070	1067	1065	1065	1068	1073	1073	1069	1069	1074				
40	985	985	985	986	987	990	995	993	989	988	990	996	994	992	995				
45	905	903	902	900	900	900	901	905	910	905	903	905	911	906	908				
50	806	807	808	811	811	808	807	807	810	816	812	808	813	814	814				
55	703	703	704	704	706	708	712	709	707	708	712	709	710	715	711				
60	600	600	599	599	598	599	600	602	606	602	602	607	603	607	605				
65	491	491	491	492	492	491	491	491	492	494	494	493	496	494	496				
70	380	380	380	381	381	381	381	382	381	381	382	382	382	383	385				
75	270	270	270	271	271	272	272	272	272	273	272	271	273	273	273				
80	17.9	31.4	48.4	68.6	91.6	117	144	166	167	168	168	168	165	166	166				
85	0.00	0.00	0.00	0.00	0.00	0.00	0.00	0.00	0.00	0.00	32.6	64.5	68.7	63.8	60.5				
90	0.00	0.00	0.00	0.00	0.00	0.00	0.00	0.00	0.00	0.00	0.00	0.00	0.00	0.00	0.00				

C Range: 0 - 360DEG  
 C Interval: 5.0DEG  
 Test Speed: HIGH  
 Temperature:25.3DEG  
 Operators:DAMIN  
 Test Date:2023-8-8

γ Range: 0 - 90DEG  
 γ Interval: 0.5DEG  
 Test System:EVERFINE GO-2000A\_V1 SYSTEM V2.0.286  
 Humidity:65.0%  
 Test Distance:13.420m [K=1.0000]  
 Remarks: IL-PN195 3.500K

Photometric Data Table [cd]

G/C	0.0	5.0	10.0	15.0	20.0	25.0	30.0	35.0	40.0	45.0
0.0	1349	1349	1349	1349	1349	1349	1349	1349	1349	1349
2.5	1347	1346	1346	1345	1345	1344	1344	1343	1343	1342
5.0	1343	1342	1340	1339	1338	1337	1336	1336	1335	1335
7.5	1336	1334	1332	1331	1329	1328	1327	1327	1326	1326
10.0	1326	1323	1321	1319	1318	1317	1316	1316	1315	1315
12.5	1313	1310	1308	1306	1304	1303	1303	1303	1303	1304
15.0	1298	1294	1291	1289	1288	1287	1287	1288	1289	1290
17.5	1280	1276	1273	1271	1269	1269	1270	1272	1274	1276
20.0	1259	1255	1251	1249	1249	1249	1251	1254	1257	1261
22.5	1236	1231	1227	1226	1226	1227	1230	1234	1238	1236
25.0	1210	1205	1201	1200	1201	1203	1207	1213	1209	1206
27.5	1182	1176	1173	1172	1173	1177	1183	1180	1177	1176
30.0	1151	1145	1141	1141	1144	1150	1151	1147	1145	1145
32.5	1118	1111	1108	1109	1113	1119	1114	1112	1112	1112
35.0	1082	1075	1073	1074	1080	1081	1077	1076	1077	1080
37.5	1044	1037	1035	1038	1045	1041	1038	1039	1042	1047
40.0	1005	997.0	995.4	999.6	1004	999.3	998.6	1001	1006	1009
42.5	962.3	954.7	953.8	959.2	959.1	956.6	957.9	962.7	967.2	963.0
45.0	917.9	910.3	910.4	917.4	913.3	912.7	916.6	923.4	919.3	916.5
47.5	871.9	864.2	865.2	870.9	866.6	868.1	874.4	874.2	870.7	869.9
50.0	823.9	816.2	818.4	820.4	818.2	823.0	828.1	823.4	822.2	823.3
52.5	774.0	766.8	770.0	769.0	768.0	776.0	775.2	772.7	773.6	776.6
55.0	719.1	713.6	720.3	716.8	718.4	723.1	722.0	721.8	724.8	728.9
57.5	666.5	661.1	668.9	663.8	668.6	668.0	667.7	671.2	675.8	673.3
60.0	612.2	607.6	612.6	610.4	616.5	613.0	614.9	620.9	618.7	617.8
62.5	557.2	553.4	555.9	557.2	559.1	558.6	563.4	563.6	562.6	563.0
65.0	501.3	498.2	499.5	504.2	502.3	505.1	507.7	506.6	507.2	508.8
67.5	444.8	443.2	443.4	447.3	446.7	451.7	450.0	450.7	452.7	455.2
70.0	388.2	387.6	388.1	389.2	392.0	393.6	394.0	396.2	398.8	399.3
72.5	332.2	331.9	334.1	333.2	336.1	337.4	339.6	341.8	342.8	343.8
75.0	276.8	275.2	277.5	279.4	280.6	283.4	285.6	286.9	288.0	289.0
77.5	222.6	219.3	220.6	224.2	227.7	230.6	231.9	233.2	234.2	234.9
80.0	168.0	162.7	166.4	171.7	176.3	178.5	179.9	180.8	181.2	157.3
82.5	111.6	106.6	114.1	122.1	126.2	128.3	125.2	89.91	55.04	21.32
85.0	55.97	56.00	68.25	75.31	71.87	36.09	0	0	0	0
87.5	10.93	20.06	25.25	0	0	0	0	0	0	0
90.0	0.6410	0	0	0	0	0	0	0	0	0
G/C	50.0	55.0	60.0	65.0	70.0	75.0	80.0	85.0	90.0	95.0
0.0	1349	1349	1349	1349	1349	1349	1349	1349	1349	1349
2.5	1342	1342	1342	1342	1341	1341	1341	1341	1341	1341
5.0	1334	1334	1334	1333	1333	1333	1334	1333	1334	1333
7.5	1325	1325	1325	1325	1325	1325	1326	1326	1326	1326
10.0	1316	1316	1316	1316	1317	1317	1317	1318	1318	1318
12.5	1304	1305	1306	1307	1308	1309	1309	1310	1310	1310
15.0	1292	1294	1296	1298	1299	1300	1301	1302	1303	1302
17.5	1279	1282	1283	1281	1280	1279	1279	1278	1278	1279
20.0	1261	1259	1257	1256	1255	1255	1254	1254	1254	1255
22.5	1233	1231	1231	1230	1230	1230	1230	1230	1230	1231
25.0	1205	1204	1204	1204	1205	1205	1206	1206	1206	1206
27.5	1175	1176	1176	1178	1179	1180	1181	1182	1182	1182
30.0	1145	1147	1149	1151	1153	1155	1157	1158	1158	1158
32.5	1115	1118	1121	1124	1122	1121	1120	1120	1120	1120
35.0	1084	1088	1086	1084	1082	1082	1081	1081	1081	1081
37.5	1050	1046	1044	1043	1042	1042	1042	1043	1043	1043
40.0	1005	1003	1002	1002	1002	1003	1003	1004	1004	1004
42.5	961.0	959.9	960.3	961.1	962.2	963.2	964.5	965.3	965.8	965.8
45.0	916.2	916.6	918.0	920.1	922.2	923.7	925.6	926.6	927.2	927.2
47.5	871.0	873.3	875.9	878.9	878.8	877.4	876.9	876.7	876.9	877.2
50.0	825.9	829.7	829.8	828.3	827.3	826.5	826.2	826.3	826.5	826.7
52.5	780.9	778.8	776.9	776.2	775.8	775.7	775.6	775.9	776.1	776.3
55.0	726.3	725.0	724.4	724.2	724.4	724.8	725.0	725.5	725.8	725.8
57.5	671.9	671.7	671.9	672.4	673.2	673.9	674.5	675.1	675.4	675.3
60.0	617.9	618.5	619.6	620.8	622.0	623.2	624.0	624.7	625.0	624.8
62.5	564.2	565.7	567.5	569.1	569.1	569.2	569.2	569.4	569.5	569.5
65.0	510.9	512.7	512.9	513.1	513.4	513.5	513.7	513.9	514.1	514.1
67.5	456.1	456.5	456.9	457.4	457.7	458.0	458.2	458.4	458.6	458.7
70.0	400.1	400.7	401.3	401.8	402.2	402.5	402.7	402.9	403.1	403.2
72.5	344.7	345.4	346.0	346.4	346.9	347.1	347.3	347.5	347.7	347.8
75.0	289.8	290.5	290.9	291.3	291.6	291.8	291.9	292.0	292.2	292.3
77.5	235.5	235.9	216.4	195.7	178.2	164.3	154.2	148.1	146.1	148.2
80.0	127.4	99.74	74.63	52.64	34.11	19.37	8.669	2.176	0	2.179
82.5	0	0	0	0	0	0	0	0	0	0
85.0	0	0	0	0	0	0	0	0	0	0

C Range: 0 - 360DEG  
 C Interval: 5.0DEG  
 Test Speed: HIGH  
 Temperature: 25.3DEG  
 Operators: DAMIN  
 Test Date: 2023-8-8

γ Range: 0 - 90DEG  
 γ Interval: 0.5DEG  
 Test System: EVERFINE GO-2000A\_V1 SYSTEM V2.0.286  
 Humidity: 65.0%  
 Test Distance: 13.420m [K=1.0000]  
 Remarks: IL-PN195 3.500K

Photometric Data Table [cd]

87.5	0	0	0	0	0	0	0	0	0	0
90.0	0	0	0	0	0	0	0	0	0	0
G/C	100.0	105.0	110.0	115.0	120.0	125.0	130.0	135.0	140.0	145.0
0.0	1349	1349	1349	1349	1349	1349	1349	1349	1349	1349
2.5	1341	1341	1341	1342	1342	1342	1342	1343	1343	1344
5.0	1333	1334	1334	1334	1334	1335	1335	1335	1336	1336
7.5	1326	1326	1326	1326	1326	1326	1326	1327	1327	1328
10.0	1318	1318	1317	1317	1317	1317	1317	1316	1317	1317
12.5	1310	1309	1309	1308	1307	1307	1306	1305	1305	1304
15.0	1302	1301	1300	1299	1297	1296	1294	1292	1291	1290
17.5	1279	1280	1281	1283	1285	1284	1281	1279	1276	1274
20.0	1255	1256	1256	1257	1259	1261	1264	1264	1260	1257
22.5	1231	1231	1231	1232	1233	1234	1236	1239	1243	1238
25.0	1206	1206	1206	1206	1206	1206	1208	1210	1213	1217
27.5	1182	1181	1180	1179	1178	1178	1179	1179	1181	1185
30.0	1157	1156	1154	1153	1151	1149	1148	1148	1149	1151
32.5	1121	1122	1123	1125	1123	1120	1117	1116	1115	1117
35.0	1082	1083	1083	1085	1087	1090	1086	1083	1081	1081
37.5	1043	1043	1044	1045	1046	1048	1052	1049	1045	1043
40.0	1004	1004	1004	1004	1005	1006	1008	1012	1009	1005
42.5	965.4	964.8	964.1	963.5	962.8	962.7	963.8	966.1	970.1	966.3
45.0	926.6	925.5	924.1	922.8	921.1	919.8	919.6	920.2	922.4	926.6
47.5	877.9	879.1	880.9	881.9	879.2	876.7	875.1	874.1	873.7	877.3
50.0	827.3	828.0	829.4	831.0	833.3	834.0	830.6	827.3	825.1	826.9
52.5	776.6	776.9	777.8	778.8	780.3	783.1	786.1	779.7	776.7	776.3
55.0	725.9	725.9	726.3	726.6	727.4	729.0	731.4	731.5	728.2	725.8
57.5	675.2	674.9	674.8	674.6	674.6	675.2	675.7	676.0	679.2	675.4
60.0	624.6	624.0	623.4	622.5	622.0	621.6	620.8	620.8	622.5	625.6
62.5	569.8	569.9	570.3	570.5	569.5	568.4	566.7	565.9	566.2	567.8
65.0	514.3	514.3	514.5	514.6	514.8	515.0	513.5	511.7	510.6	510.8
67.5	458.8	458.8	458.9	458.9	458.8	458.8	458.7	458.1	455.9	454.6
70.0	403.3	403.3	403.4	403.4	403.2	403.0	402.5	401.9	401.4	399.5
72.5	347.9	347.9	348.1	348.0	347.8	347.5	347.0	346.2	345.5	344.7
75.0	292.5	292.6	292.8	292.8	292.7	292.5	292.0	291.3	290.7	289.8
77.5	154.5	164.8	179.0	196.8	217.9	237.8	237.5	237.1	236.8	236.1
80.0	8.687	19.43	34.26	52.94	75.16	100.6	128.6	159.0	183.7	183.6
82.5	0	0	0	0	0	0	0	21.56	55.84	91.54
85.0	0	0	0	0	0	0	0	0	0	0
87.5	0	0	0	0	0	0	0	0	0	0
90.0	0	0	0	0	0	0	0	0	0	0
G/C	150.0	155.0	160.0	165.0	170.0	175.0	180.0	185.0	190.0	195.0
0.0	1349	1349	1349	1349	1349	1349	1349	1349	1349	1349
2.5	1344	1345	1345	1346	1346	1347	1348	1347	1346	1345
5.0	1337	1338	1339	1340	1341	1342	1343	1342	1340	1339
7.5	1328	1329	1330	1331	1333	1335	1337	1334	1332	1330
10.0	1317	1318	1319	1321	1323	1325	1327	1324	1322	1319
12.5	1304	1305	1306	1308	1309	1312	1315	1311	1308	1306
15.0	1290	1290	1290	1292	1294	1296	1300	1296	1292	1289
17.5	1273	1272	1272	1273	1275	1278	1282	1277	1273	1271
20.0	1254	1253	1252	1252	1254	1257	1262	1256	1252	1250
22.5	1234	1231	1229	1229	1231	1234	1239	1233	1229	1226
25.0	1212	1207	1205	1204	1205	1208	1213	1207	1203	1201
27.5	1188	1182	1178	1176	1177	1179	1185	1178	1174	1173
30.0	1156	1155	1150	1147	1146	1149	1155	1147	1144	1143
32.5	1120	1126	1119	1115	1113	1116	1122	1114	1111	1110
35.0	1082	1087	1087	1081	1078	1080	1086	1079	1075	1076
37.5	1044	1047	1053	1045	1041	1043	1049	1041	1038	1040
40.0	1004	1006	1012	1007	1002	1003	1009	1001	999.1	1002
42.5	962.8	962.9	966.9	967.8	961.4	961.1	967.4	959.4	957.9	962.5
45.0	921.0	918.7	921.1	926.8	918.5	917.2	923.3	915.4	914.8	921.2
47.5	878.4	873.8	874.0	880.8	874.1	871.6	877.6	869.7	870.3	875.3
50.0	831.8	827.9	826.0	830.6	828.1	824.1	829.7	822.1	824.5	824.9
52.5	779.1	781.6	776.9	779.5	780.5	774.5	780.4	772.5	776.6	773.6
55.0	726.2	730.7	727.2	726.0	728.8	722.8	729.2	720.8	724.7	720.2
57.5	673.2	675.3	676.8	672.0	677.6	670.7	676.5	668.6	673.3	666.2
60.0	620.9	619.8	624.4	618.9	621.7	617.2	622.2	615.1	617.5	613.0
62.5	568.9	565.1	566.5	565.7	565.1	563.0	567.2	560.9	561.0	559.8
65.0	512.7	511.2	509.5	512.2	508.5	508.1	511.4	506.0	504.4	506.6
67.5	454.7	457.3	453.5	455.4	452.1	452.9	455.1	451.0	448.3	449.7
70.0	398.2	398.6	399.2	397.1	396.1	398.1	398.5	396.0	392.1	391.9
72.5	343.1	342.0	343.1	340.9	341.5	343.0	340.9	341.0	338.1	335.7
75.0	288.8	287.4	286.5	287.5	285.0	285.7	285.9	284.4	282.4	282.8
77.5	235.2	234.1	232.6	231.4	228.8	229.1	231.9	229.4	228.2	227.7

C Range: 0 - 360DEG  
 C Interval: 5.0DEG  
 Test Speed: HIGH  
 Temperature: 25.3DEG  
 Operators: DAMIN  
 Test Date: 2023-8-8

γ Range: 0 - 90DEG  
 γ Interval: 0.5DEG  
 Test System: EVERFINE GO-2000A\_V1 SYSTEM V2.0.286  
 Humidity: 65.0%  
 Test Distance: 13.420m [K=1.0000]  
 Remarks: IL-PN195 3.500K



Photometric Data Table [cd]

80.0	183.0	182.0	180.5	177.5	175.2	171.7	177.4	175.6	176.4	173.9
82.5	128.0	131.7	130.2	126.9	121.3	115.1	120.5	121.2	120.8	122.8
85.0	0	37.23	75.22	79.70	73.52	64.02	64.39	69.60	70.59	75.11
87.5	0	0	0	0	28.72	23.35	15.75	22.20	26.16	0
90.0	0	0	0	0	0	0	0.8784	0	0	0
G/C	200.0	205.0	210.0	215.0	220.0	225.0	230.0	235.0	240.0	245.0
0.0	1349	1349	1349	1349	1349	1349	1349	1349	1349	1349
2.5	1345	1344	1343	1343	1342	1342	1341	1341	1341	1340
5.0	1338	1337	1336	1335	1334	1333	1333	1332	1332	1331
7.5	1329	1327	1326	1325	1324	1324	1323	1323	1322	1322
10.0	1317	1316	1315	1314	1313	1313	1312	1312	1312	1312
12.5	1304	1302	1301	1300	1300	1300	1301	1301	1301	1302
15.0	1287	1286	1286	1286	1286	1287	1288	1289	1290	1291
17.5	1269	1268	1268	1269	1270	1272	1274	1276	1276	1274
20.0	1248	1248	1249	1251	1253	1256	1256	1252	1250	1248
22.5	1225	1226	1228	1231	1234	1231	1227	1225	1222	1221
25.0	1200	1202	1205	1209	1204	1200	1198	1196	1195	1194
27.5	1173	1176	1181	1177	1172	1169	1168	1167	1167	1167
30.0	1144	1149	1148	1143	1139	1137	1137	1137	1138	1139
32.5	1114	1119	1112	1108	1105	1105	1105	1107	1109	1111
35.0	1081	1080	1074	1071	1070	1071	1073	1076	1073	1070
37.5	1046	1040	1035	1033	1034	1037	1038	1034	1031	1029
40.0	1005	997.7	994.6	994.8	997.5	998.8	994.3	991.0	989.1	987.9
42.5	960.2	954.7	953.3	955.4	958.0	952.8	949.6	947.6	946.7	946.5
45.0	914.2	910.3	911.1	915.3	909.7	906.7	904.8	904.3	904.3	905.1
47.5	866.9	865.1	868.2	865.8	860.7	860.0	859.9	860.7	862.0	863.7
50.0	818.9	819.0	821.3	815.2	812.0	812.1	815.1	817.2	815.7	812.5
52.5	769.6	772.7	768.5	764.2	763.3	764.2	770.5	765.8	762.4	759.9
55.0	719.8	721.6	715.4	713.5	714.6	716.4	714.4	711.7	709.2	707.4
57.5	669.0	666.0	662.5	663.0	665.2	660.9	658.7	657.8	656.1	655.0
60.0	616.7	610.7	609.9	612.8	608.5	605.7	603.9	604.0	603.2	602.7
62.5	559.0	555.9	557.9	555.5	552.4	550.8	550.1	550.6	550.4	550.4
65.0	502.1	502.1	502.0	498.5	496.9	496.5	496.8	497.0	495.7	494.6
67.5	446.2	448.2	444.3	442.5	442.3	442.9	442.1	441.0	440.0	439.1
70.0	392.0	390.0	388.1	387.7	388.1	387.2	386.3	385.5	384.5	383.7
72.5	336.3	333.7	333.3	333.3	332.5	331.9	331.2	330.3	329.4	328.6
75.0	280.3	279.6	279.3	278.7	278.0	277.3	276.5	275.5	274.5	273.6
77.5	226.9	226.6	226.0	225.4	224.5	223.4	222.2	221.0	202.2	182.5
80.0	175.1	174.6	174.1	173.1	171.8	148.2	119.7	93.38	69.74	49.10
82.5	124.5	124.4	119.8	85.52	52.11	20.11	0	0	0	0
85.0	69.90	34.80	0	0	0	0	0	0	0	0
87.5	0	0	0	0	0	0	0	0	0	0
90.0	0	0	0	0	0	0	0	0	0	0
G/C	250.0	255.0	260.0	265.0	270.0	275.0	280.0	285.0	290.0	295.0
0.0	1349	1349	1349	1349	1349	1349	1349	1349	1349	1349
2.5	1340	1340	1340	1340	1340	1340	1340	1340	1340	1340
5.0	1331	1331	1331	1331	1331	1331	1331	1331	1331	1331
7.5	1322	1322	1322	1322	1322	1322	1321	1321	1321	1321
10.0	1312	1312	1312	1312	1313	1312	1312	1312	1312	1311
12.5	1302	1303	1303	1303	1303	1303	1302	1302	1301	1301
15.0	1292	1293	1293	1294	1294	1294	1293	1292	1291	1290
17.5	1272	1271	1270	1269	1269	1269	1269	1270	1271	1272
20.0	1246	1245	1244	1244	1244	1244	1244	1244	1245	1246
22.5	1220	1219	1219	1219	1219	1218	1218	1218	1219	1219
25.0	1194	1194	1194	1193	1193	1193	1193	1192	1192	1192
27.5	1167	1168	1168	1168	1168	1168	1167	1167	1166	1165
30.0	1140	1142	1143	1143	1143	1143	1142	1141	1139	1137
32.5	1108	1106	1105	1104	1104	1104	1104	1105	1107	1109
35.0	1068	1067	1066	1065	1064	1064	1065	1065	1066	1068
37.5	1028	1027	1026	1026	1025	1025	1025	1025	1026	1027
40.0	987.2	986.7	986.5	986.3	985.9	985.6	985.2	984.9	984.8	985.0
42.5	946.5	946.8	947.0	946.9	946.7	946.2	945.5	944.8	943.9	943.3
45.0	906.0	906.8	907.5	907.5	907.4	906.8	905.8	904.5	903.0	901.6
47.5	862.1	859.9	858.3	857.0	856.5	856.3	856.6	857.5	858.9	859.8
50.0	810.1	808.3	807.2	806.0	805.6	805.4	805.5	806.0	806.9	808.4
52.5	758.1	756.8	756.0	755.1	754.6	754.4	754.4	754.5	755.0	755.9
55.0	706.2	705.3	704.8	704.2	703.7	703.4	703.2	703.1	703.2	703.5
57.5	654.4	653.9	653.6	653.2	652.8	652.4	652.1	651.7	651.5	651.2
60.0	602.5	602.5	602.4	601.8	601.8	601.5	601.0	600.4	599.8	599.0
62.5	549.3	548.4	547.6	547.0	546.5	546.3	546.2	546.3	546.6	546.8
65.0	493.7	492.9	492.3	491.7	491.2	490.9	490.8	490.8	491.0	491.1
67.5	438.3	437.5	436.9	436.3	435.8	435.6	435.4	435.4	435.5	435.7
70.0	383.0	382.2	381.5	381.0	380.5	380.3	380.1	380.1	380.2	380.3

C Range: 0 - 360DEG  
 C Interval: 5.0DEG  
 Test Speed: HIGH  
 Temperature: 25.3DEG  
 Operators: DAMIN  
 Test Date: 2023-8-8

γ Range: 0 - 90DEG  
 γ Interval: 0.5DEG  
 Test System: EVERFINE GO-2000A\_V1 SYSTEM V2.0.286  
 Humidity: 65.0%  
 Test Distance: 13.420m [K=1.0000]  
 Remarks: IL-PN195 3.500K

Photometric Data Table [cd]

72.5	327.8	326.9	326.2	325.6	325.2	324.9	324.8	324.8	325.0	325.2
75.0	272.7	271.7	270.9	270.3	269.8	269.6	269.6	269.6	269.9	270.3
77.5	165.9	152.6	142.9	137.0	134.9	136.7	142.2	151.4	164.1	180.1
80.0	31.75	17.99	8.036	2.014	0	2.008	7.994	17.85	31.41	48.44
82.5	0	0	0	0	0	0	0	0	0	0
85.0	0	0	0	0	0	0	0	0	0	0
87.5	0	0	0	0	0	0	0	0	0	0
90.0	0	0	0	0	0	0	0	0	0	0
G/C	300.0	305.0	310.0	315.0	320.0	325.0	330.0	335.0	340.0	345.0
0.0	1349	1349	1349	1349	1349	1349	1349	1349	1349	1349
2.5	1341	1341	1341	1341	1342	1342	1343	1343	1344	1345
5.0	1331	1332	1332	1333	1333	1334	1335	1336	1337	1338
7.5	1321	1322	1322	1323	1323	1324	1325	1326	1328	1329
10.0	1311	1311	1311	1311	1312	1312	1313	1314	1316	1318
12.5	1300	1299	1299	1299	1298	1299	1299	1300	1302	1304
15.0	1288	1287	1285	1284	1284	1283	1283	1284	1285	1287
17.5	1274	1273	1271	1269	1267	1266	1265	1265	1266	1268
20.0	1247	1249	1252	1252	1249	1247	1245	1245	1245	1246
22.5	1220	1221	1224	1227	1230	1226	1223	1222	1221	1222
25.0	1192	1193	1194	1196	1200	1204	1200	1197	1196	1196
27.5	1164	1164	1164	1165	1168	1171	1175	1171	1168	1168
30.0	1135	1134	1133	1133	1134	1137	1142	1142	1138	1137
32.5	1107	1104	1102	1100	1100	1102	1106	1111	1107	1104
35.0	1071	1074	1070	1067	1065	1065	1068	1073	1073	1069
37.5	1028	1031	1035	1033	1029	1028	1028	1032	1038	1032
40.0	985.8	987.2	990.3	995.0	993.0	989.2	988.0	990.0	996.1	993.8
42.5	943.0	943.4	945.1	948.2	953.3	950.0	946.9	947.0	951.2	953.1
45.0	900.1	899.5	899.8	901.3	904.9	910.3	904.8	902.7	905.1	910.8
47.5	857.2	855.4	854.1	854.1	855.9	860.7	862.2	857.8	858.0	864.0
50.0	810.6	811.1	808.4	806.9	807.1	809.6	815.7	812.2	808.2	813.3
52.5	757.4	759.9	763.0	759.8	758.0	758.4	762.6	762.9	758.8	761.8
55.0	704.3	705.8	708.1	711.8	709.0	707.4	707.8	711.7	709.1	709.6
57.5	651.4	652.0	653.3	655.7	659.2	656.5	653.7	656.7	659.0	656.4
60.0	598.7	598.5	599.0	600.1	602.2	606.0	601.9	601.7	606.7	602.9
62.5	546.2	545.4	545.0	545.1	546.1	548.6	550.2	547.1	549.3	549.6
65.0	491.6	492.1	491.5	490.7	490.6	491.7	494.3	493.8	492.8	496.3
67.5	435.9	436.3	436.7	437.0	436.0	435.8	436.9	440.2	437.1	439.6
70.0	380.6	380.8	381.1	381.4	381.9	381.1	380.8	382.3	382.1	381.7
72.5	325.5	325.8	326.0	326.3	326.6	326.8	326.3	326.0	326.7	325.8
75.0	270.7	271.2	271.5	271.9	272.2	272.3	272.5	271.9	271.4	272.7
77.5	199.0	216.9	217.5	218.2	218.2	219.2	219.3	219.3	218.7	218.2
80.0	68.63	91.64	116.9	144.1	166.2	167.1	167.7	167.7	167.7	165.5
82.5	0	0	0	19.54	50.35	82.04	113.9	117.9	117.7	115.3
85.0	0	0	0	0	0	0	0	32.65	64.51	68.70
87.5	0	0	0	0	0	0	0	0	0	0
90.0	0	0	0	0	0	0	0	0	0	0
G/C	350.0	355.0								
0.0	1349	1349								
2.5	1346	1346								
5.0	1340	1341								
7.5	1331	1333								
10.0	1320	1323								
12.5	1306	1310								
15.0	1290	1294								
17.5	1271	1275								
20.0	1249	1254								
22.5	1225	1230								
25.0	1199	1203								
27.5	1170	1174								
30.0	1139	1143								
32.5	1105	1109								
35.0	1069	1074								
37.5	1031	1035								
40.0	991.6	995.1								
42.5	949.7	952.6								
45.0	906.0	908.1								
47.5	860.5	861.8								
50.0	813.6	813.7								
52.5	765.2	764.4								
55.0	715.3	711.1								
57.5	663.5	658.6								
60.0	607.4	604.9								
62.5	550.7	550.5								

C Range: 0 - 360DEG  
 C Interval: 5.0DEG  
 Test Speed: HIGH  
 Temperature: 25.3DEG  
 Operators: DAMIN  
 Test Date: 2023-8-8

γ Range: 0 - 90DEG  
 γ Interval: 0.5DEG  
 Test System: EVERFINE GO-2000A\_V1 SYSTEM V2.0.286  
 Humidity: 65.0%  
 Test Distance: 13.420m [K=1.0000]  
 Remarks: IL-PN195 3.500K

## Photometric Data Table [cd]

65.0	494.2	495.5
67.5	438.0	440.5
70.0	382.7	384.7
72.5	328.9	328.8
75.0	273.0	272.6
77.5	218.4	218.5
80.0	166.2	165.6
82.5	112.2	112.1
85.0	63.84	60.46
87.5	21.52	16.84
90.0	0	0

C Range: 0 - 360DEG  
C Interval: 5.0DEG  
Test Speed: HIGH  
Temperature: 25.3DEG  
Operators: DAMIN  
Test Date: 2023-8-8

$\gamma$  Range: 0 - 90DEG  
 $\gamma$  Interval: 0.5DEG  
Test System: EVERFINE GO-2000A\_V1 SYSTEM V2.0.286  
Humidity: 65.0%  
Test Distance: 13.420m [K=1.0000]  
Remarks: IL-PN195 3.500K